

Rutherford Laboratory

Technical Leaflet

E9

BUILDING SECTION

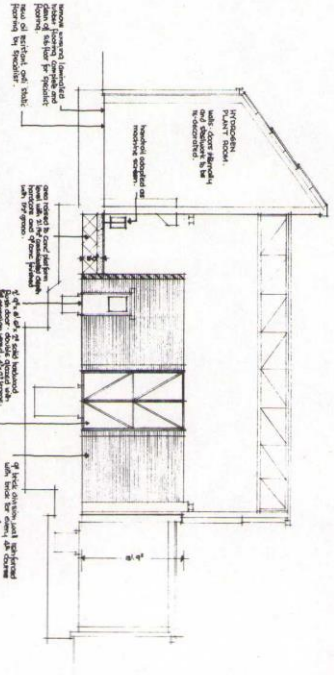
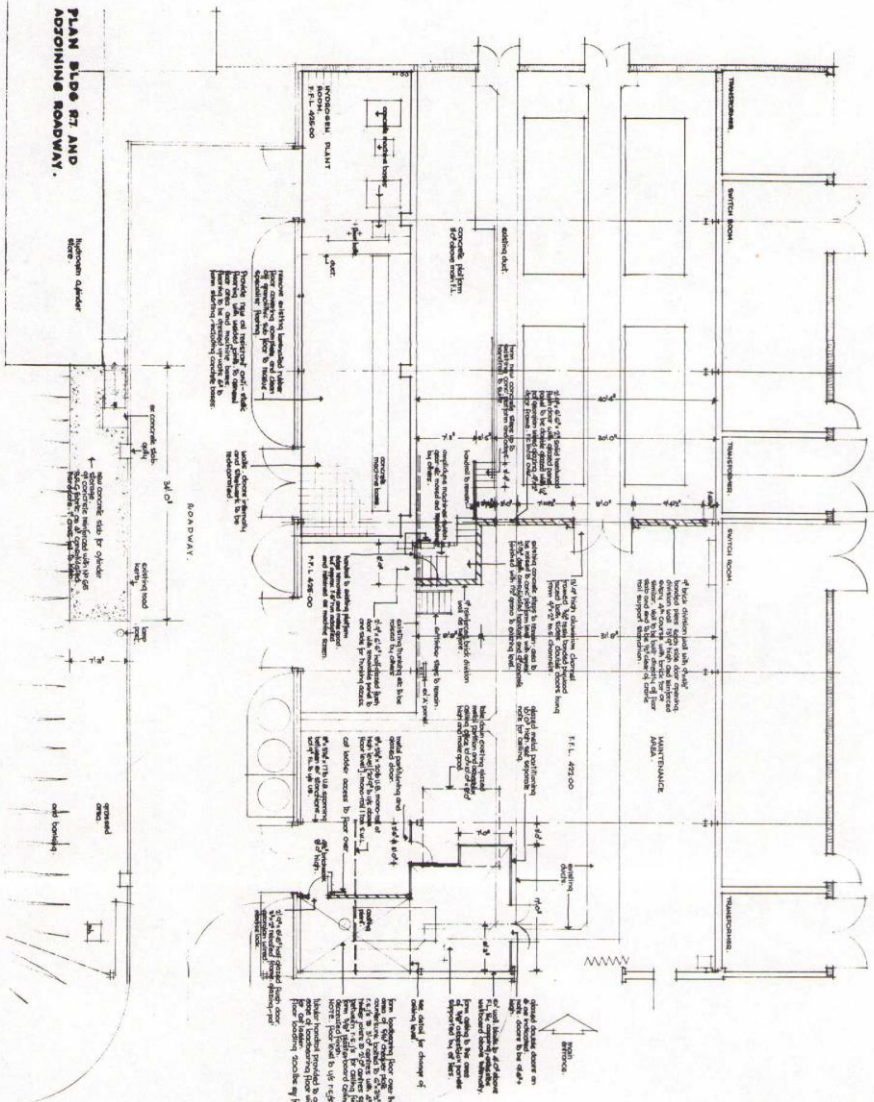
Maintenance of buildings, houses, and hostels, roads, drains, and other external work both on the Laboratory site and on adjacent housing estates is this sections responsibility. It deals with the planning, design and construction of minor building works, alterations to buildings and civil engineering services generally, liases with the Southern Works Organisation of the U.K.A.E.A. for major building works and takes over these on completion. It also provides a service of manufacturing joinery and other building trades work and has a small workshop devoted to model making.

Building maintenance is work that should never be noticed if carried out efficiently and only when neglected does its need become apparent. It has to progress continuously, but with the minimum of interference, to the inhabitants of buildings. Buildings are inspected periodically, defects noted and repaired, internal and external decoration taking place either at predetermined intervals or when it becomes necessary due to change in use of building or Laboratory.

The Sections drawing office produces schemes for new works or alterations (Fig. 1) to existing buildings or services as requested by the various Divisions of the Laboratory as well as schemes for houses and hostels for staff. Many smaller jobs do not require drawings and the work is supervised by the Clerks of Works.

The Section has just completed the planning and supervision of a contract for thirty houses at Abingdon following the completion of a similar contract for 37 at Didcot. (Fig. 2)

Building maintenance work alterations and improvements at the Laboratory and on housing estates are carried out almost wholly by building contractors directed by the Section.



**BUILDING R7
CROSS SECTION**
SCALE: 1/8" = 1'-0"

Schedule of Alteration Items

1. Form concrete slab for outdoor storage - size 34' x 7' 6" x 4" concrete reinforced with No. 5 S.C. fabric on 4" corr. windows.
2. Remove existing handrail, rubber floor covering including railing.
3. Reproduce work and railing, cover removal.
4. Add 4" reinforced base, division wall across main level of high walk.
5. Add 4" reinforced base, division wall across main level of high walk.
6. Add 4" reinforced base, division wall across main level of high walk.
7. Add 4" reinforced base, division wall across main level of high walk.
8. Add 4" reinforced base, division wall across main level of high walk.
9. Add 4" reinforced base, division wall across main level of high walk.

GUTHRIER HIGH ENERGY LABORATORY.
BUILDING R-7. PROPOSED ALTERATIONS. RLA/R7/429
 DRAWING NUMBER: RLA/R7/429
 SEE FURTHER DRAWING NO. RLA/R7/429A FOR WINDOW & CEILING FINISHES. SEE 17A FOR DETAILS.

FIGURE 1



FIGURE 2 NIRNS HOUSES AT DIDCOT