

RUTHERFORD LABORATORY BUILDING COMMITTEE

Proposed Extension to Building R.18 - Ancillary Workshop

Accommodation is required in the Rutherford Laboratory for the following small Departments for which space is not available in the existing programmed buildings:-

1. Industrial Chemistry Department

This department is responsible for supplying a chemical service to the Rutherford Laboratory and advising on chemical matters such as corrosion water treatment, ion exchange, cleaning problems, etc.

Space needed for laboratory and offices - 1,000 sq.ft.

2. Safety Group

This Group is responsible for advising on safety other than radiation hazards, maintaining records required for statutory purposes, also storing and demonstrating the use of special personnel protective equipment. Accommodation is also needed within this Group for a visiting consultant on electrical safety.

Space needed for offices and store - 520 sq.ft.

3. Welfare Office

Accommodation is required for a Welfare Office situated at a readily accessible position to industrial labour without the necessity of proceeding through Administration offices.

Space needed - 150 sq.ft.

4. Transport Group

Accommodation is required for a Transport Officer and a Drivers Rest Room adjacent to a car park.

Space needed - 250 sq.ft.

5. Groundsman's Store

Accommodation is required for the storage of equipment and tools used by the groundmans staff maintaining the Rutherford Laboratory's open spaces.

Store space needed 150 sq.ft.

Space needed - 150 sq.ft.

6. Metrology Laboratory

The space allocated in the Services (Electrical and Instruments) Section in the original scheme for Building R.18 - Ancillary Workshop is insufficient for the present needs of that Department, and it has been necessary to take over the space previously allocated for the Metrology Laboratory.

The requirement for a Metrology Laboratory will become urgent in 12 to 18 months' time when the survey and pole piece installation in the Magnet Room ceases.

The Services (Electronic and Instrument) Section's need for space will not diminish and construction modifications to the design of the original Metrology Laboratory are essential for an efficient arrangement.

Space needed - 1,000 sq.ft.

It is submitted that approval of a preliminary scheme based on the attached drawing RLA/R.18/103 showing an extension to the existing Building R.18 - Ancillary Workshop is approved to proceed. The scheme includes a Mess Room, Locker Room and Male Toilet for approximately 40 men together with a Female Toilet. These needs are considered essential in view of the personnel now proposed to accommodate in Buildings R.17, R.18 and the proposed extension.

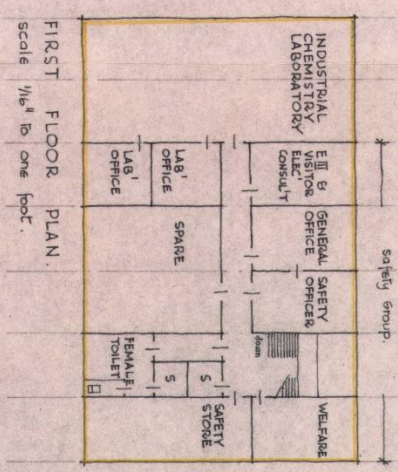
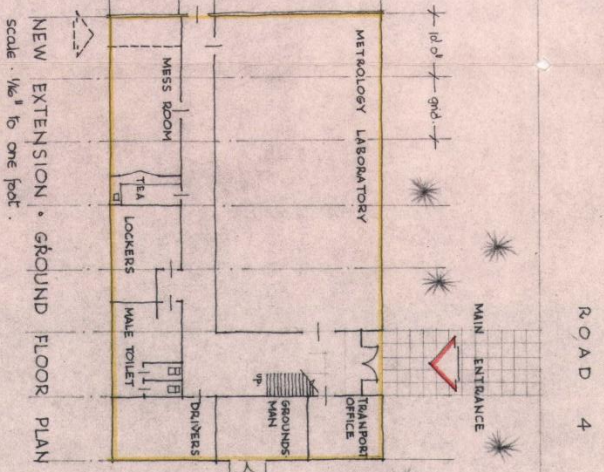
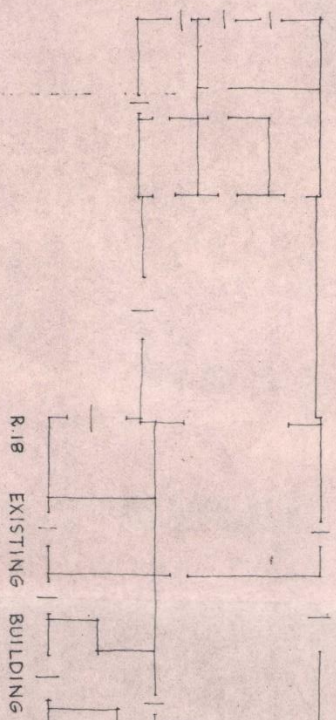
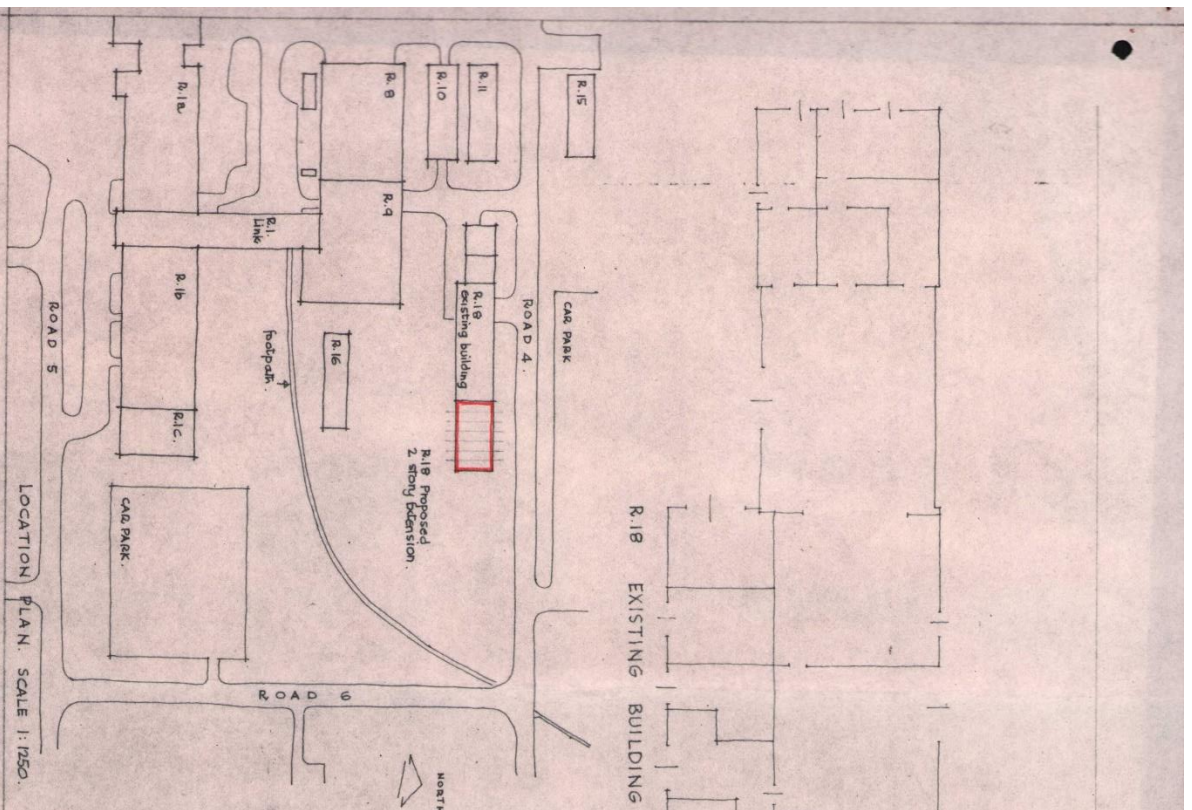
Space needed - 750 sq.ft.

Total floor space of proposed extension - 5,880 sq.ft.

Approximate estimate of cost involved is £45,000.

J.A. GOODE

29th December, 1961.



National Institute for Research in Nuclear Science
 R.18 SKETCH PLAN - PROPOSED 2 STOREY EXTENSION
 Philip Crowe and his Architect • December 1961 • Drawing RLA/R.18/103